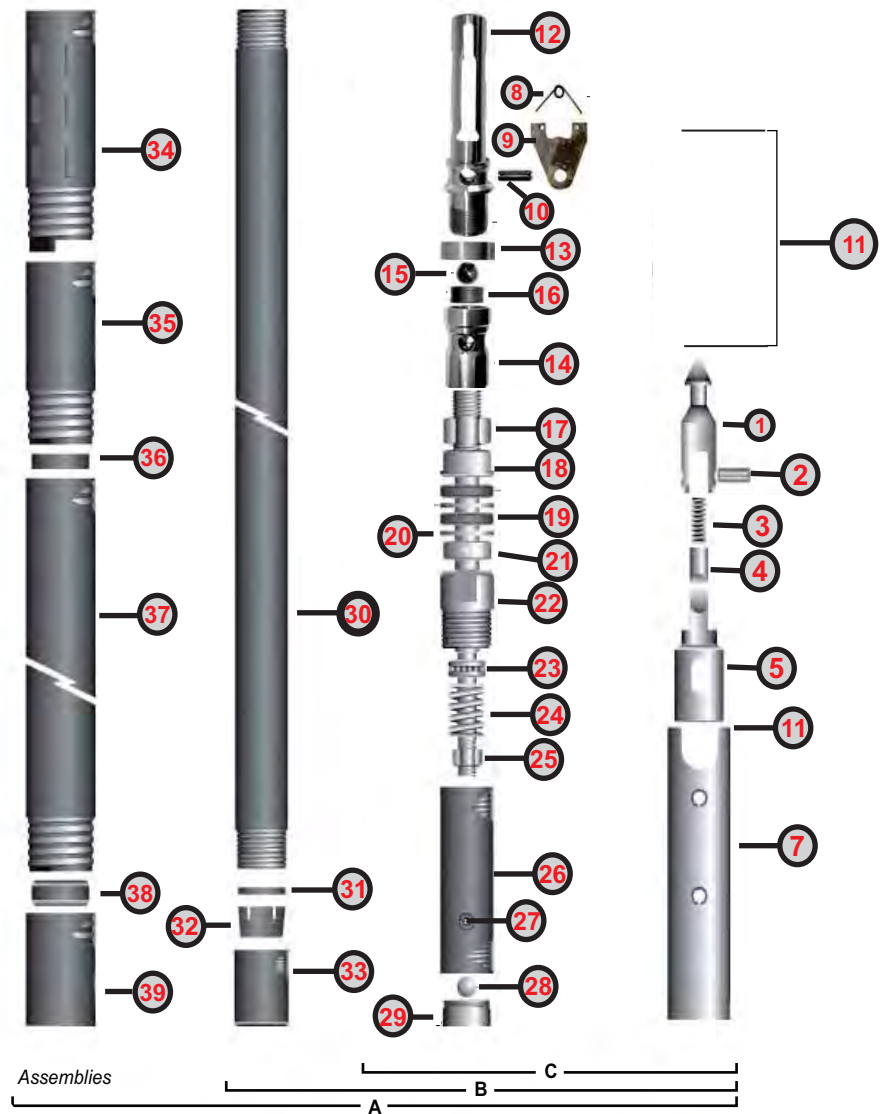




Northeast Geotechnical Supply offers a full range of high quality wireline core barrels. This includes the “standard” above ground series, Thin Kerf systems that provide larger core sizes and use lighter drill rod. Although not shown, we also offer triple and underground wireline versions of our core barrel systems. All products are compatible with systems commonly used in the drilling industry. Our bits, reaming shells, and consumable items are all industry standard

## Parts Breakdown Wireline Core Barrels



## Wireline Corebarrel Sizes

	Size	Hole	Core	Weight ( lbs)		Part Number	
		Diameter	Size	5 ft	10 ft	5 ft	10 Ft
Standard Wireline	B WL	2.359	1.432	54	84	421000-5	421000-10
	N WL	2.984	1.875	95	139	431000-5	431000-10
	N2 WL	2.984	1.995	95	139	432000-5	432000-10
	H WL	3.781	2.5	155	230	441000-5	441000-10
	P WL	4.828	3.344	187	299	451000-5	451000-5
Thin Kerf	BWT	2.359	1.654	49	74.4	422000-5	422000-5
	NWT	2.984	2.205	75	110	434000-5	434000-5
	HWT	3.781		128	185.5	442000-5	442000-10
Triple Tube	N3 WL	2.984	1.775	95	139	433000-5	433000-10
	H3 WL	3.78	2.406	155	230	443000-5	443000-10
	P3 WL	4.828	3.345	187	299	453000-5	453000-10



## Above Ground Wireline Core Barrels

Thin Kerf Systems

ITEM	DESCRIPTION	BTW		NTW		HTW	
		Part NBR	LBS	Part NBR	LBS	Part NBR	LBS
1-38	Core Barrel Assy - 5 ft (1.5m)	422000-5	49	434000-5	75	442000-5	128
1-38	Core Barrel Assy - 10 ft (3.0m)	422000-10	75	434000-10	110	442000-10	185
1-33	Inner Tube Assy - 5 ft (1.5 m)	422090-5	21	434090-5	32	442090-5	62
1-33	Inner Tube Assy - 10 ft ( 3.0m)	422090-10	28	434090-10	40	442909-10	78
1-22	Head Assy ( no inner tube)	422091	11.6	434091	21	442091	*
1	Spear Head Point	422001	*	434001	*	442001	*
2	Spirol Pin	422002	*	434002	*	442002	*
3	Compression Spring	422003	*	434003	*	442003	*
4	Detent Plunger	422004	*	434004	*	442004	*
5	Spear Head Base	422005	0.5	434005	1.3	442005	*
6	Pin (1/2 x 2) (2 req)	422006	*	434006	*	442006	*
7	Latch Retracting Case	422007	1.7	434007	2.7	442007	*
8	Latch Spring	422008	*	434008	*	442008	*
9	Latch (2 req)	422009	*	434009	*	442009	*
10	Spring pin (1/2 x 1 1/2)	422010	*	434010	*	442010	*
11	Latch Body Assembly	422011	3	434011	5.4	442011	*
12	Upper Body	422012	*	434012	*	442012	*
13	Landing Shoulder	422013	*	434013	*	442013	*
14	Lower Body	433014	*	434014	*	442014	*
15	Steel Body	422015	*	434015	*	442015	*
16	Landing Indicator Washer	422016	*	434016	*	442016	*
17	Lock Nut	422017	*	434017	*	442017	*
18A	Spindle Assembly	422018	1	434018	*	442018	*
19	Shutoff Valve (2 req)	422019	*	434019	*	442019	*
20	Valve Adjusting Washer (2 req)	422020	*	434020	*	442020	*
21	Ball Thrust Bearing	422021	*	434021	*	442021	*
22	Spindle Bearing	422022	*	434022	*	442022	*
23	Hanger Bearing	422023	0.5	434023	1.6	442023	7.5
24	Compression Spring	422024	*	434024	*	442024	*
25	Self Locking Nut	422025	*	434025	*	442025	*
26	Inner Tube Cap Assy	422026	2.2	434026	3.3	442026	
27	Grease Fitting	422027	*	434027	*	442027	*
28	Steel Ball	422028	*	434028	*	442028	*
29	Check Valve Body	422029	*	434029	*	442029	*
30	Inner Tube - 5 ft ( 1.5 m)	422030-5	8	434030-5	12.3	442030-5	23
30	Inner tube - 10 ft ( 3.0 )	422030-10	16	434030-6	24.5	442030-10	50
31	Stop Ring	422031	*	434031	*	442031	*
32A	core Lifter - Fluted	422032-A	*	434032-A	*	442032-A	*
32B	Core lifter Fluted - Diamond	422032-B	*	434032-B	*	442032-B	*
33	Core Lifter Case	422033-1	*	434033-1	*	442033-1	*
34	Locking Coupling	422034	3.8	434034	5.8	442034	8.3
35	Adapter Coupling	422035	1.8	434035	3.6	442035	6.7
36	Landing Ring	422036	*	434036	*	442026	*
37	Outer Tube - 5 ft ( 1.5m)	422037-5	29	434027-5	44	442027-5	*
37	Outer Tube - 10 Ft ( 3.0m)	422037-10	53	434037-10	79	442037-10	62.4
38	Inner Tube Stabilizer( Brass)	422038	*	434038	*	442038	137
38	Thread Protector	422039	*	434039	*	442039	*



## Above Ground Wireline Core Barrels

Standard Wireline Systems

ITEM	DESCRIPTION	B WL		N WL		N2 WL		H WL		P WL	
		Part NBR	LBS	Part NBR	LBS	Part NBR	LBS	Part NBR	LBS	Part NBR	LBS
1-38	Core Barrel Assy - 5 ft (1.5m)	421000-5	54	431000-5	95	432000-5	155	441000-5	187	45100-5	*
1-38	Core Barrel Assy - 10 ft (3.0m)	421000-10	84	431000-10	139	432000-10	230	441000-10	299	45100-10	*
1-33	Inner Tube Assy - 5 ft (1.5 m)	421090-5	21	431090-5	38	432090-5	68	441090-5	99	451090-5	*
1-33	Inner Tube Assy - 10 ft ( 3.0m)	421090-10	28	431090-10	47	432090-10	86	441090-10	126	451090-10	*
1-22	Head Assy ( no inner tube)	421091	11.6	431091	21	432091	48	441000	79	451091	*
1	Spear Head Point	431001	*	431001	*	432001	*	441001	*	451001	*
2	Spirol Pin	421002	*	431002	*	432002	*	441002	*	451002	*
3	Compression Spring	421003	*	431003	*	432003	*	441003	*	451003	*
4	Detent Plunger	421004	*	431004	*	432004	*	441004	*	451004	*
5	Spear Head Base	421005	0.5	431005	1.3	432005	1.7	441005	7	451005	*
6	Pin (1/2 x 2) (2 req)	421006	*	431006	*	432006	*	441006	*	451006	*
7	Latch Retracting Case	421007	1.7	431007	2.7	432007	5.5	441007	8	451007	*
8	Latch Spring	421008	*	431008	*	432008	*	441008		451008	*
9	Latch (2 req)	421009	*	431009	*	432009	*	441009	*	451009	*
10	Spring pin (1/2 x 1 1/2)	421010	*	431010	*	432010	*	441010	*	451010	*
11	Latch Body Assembly	421011	3	431011	5.4	432011	12	441011	17.5	451011	*
12	Upper Body	421012	*	431012	*	432012	*	441012	*	451012	*
13	Landing Shoulder	431013	*	431013	*	431013	*	441013	*	451013	*
14	Lower Body	421014	*	431014	*	432014	*	441014	*	451014	*
15	Steel Body	421015	*	421015	*	432015	*	441015	*	451015	*
16	Landing Indicator Washer	421016	*	431016	*	432016	*	441016	*	451016	*
17	Lock Nut	421017	*	431017	*	432017	*	441017	*	451017	*
18A	Spindle Assembly	421018	1	431018	*	432018	*	441018	*	451018	*
19	Shutoff Valve (2 req)	421019	*	431019	*	432019	*	441019	*	451019	*
20	Valve Adjusting Washer (2 req)	421020	*	431020	*	432020	*	441020	*	451020	*
21	Ball Thrust Bearing	421021	*	431021	*	432021	*	441021	*	451021	*
22	Spindle Bearing	421022	*	431022	*	432022	*	441022	*	451022	*
23	Hanger Bearing	421023	0.5	431023	1.6	432023	3.9	441023	*	451023	7.5
24	Compression Spring	421024	*	431024	*	432024	*	441024	*	451024	*
25	Self Locking Nut	421025	*	431025	*	432025	*	441025	*	451025	*
26	Inner Tube Cap Assy	421026	2.2	431026	3.3	432026	3.3	441026	5.7	451026	
27	Grease Fitting	421027	*	431027	*	432027	*	441027	*	451027	*
28	Steel Ball	421028	*	431028	*	432028	*	441028	*	451028	*
29	Check Valve Body	421029	*	431029	*	432029	*	441029	*	451029	*
30	Inner Tube - 5 ft ( 1.5 m)	421030-5	8	431030-5	12.3	432030-5	11.5	441030-5	17.8	451030-5	23
30	Inner tube - 10 ft ( 3.0 )	421030-10	16	431030-10	24.5	432030-10	22.8	441030-10	35.5	451030-10	50
31	Stop Ring	421031	*	432031	*	432031	*	441031	*	451031	*
32A	core Lifter - Fluted	421032-A	*	431032-A	*	432032-A	*	441032-A	*	451032-A	*
32B	Core lifter Fluted - Diamond	421032-B	*	431032-B	*	432032-B	*	441033-B	*	451032-B	*
33	Core Lifter Case	421033-1	*	431033-1	*	432033-1	*	441033-1	*	451033-1	*
34	Locking Coupling	421034	3.8	431034	5.8	431034	5.8	441034	13	451034	8.3
35	Adapter Coupling	421035-1	1.8	431035-1	3.6	431035-1	3.6	441035-1	9.5	451035-1	6.7
36	Landing Ring	421036	*	431036	*	432036	*	441036	*	451036	*
37	Outer Tube - 5 ft ( 1.5m)	421037-5	29	431037-5	44	431037-5	44	441037-5	57	451037-5	*
37	Outer Tube - 10 Ft ( 3.0m)	421037-10	53	431037-10	79	431037-10	79	441037-10	113	451037-10	62.4
38	Inner Tube Stabilizer( Brass)	421039	*	431038	*	432038	*	441038	*	451038	137
38	Thread Protector	421040	*	431039	*	431039	*	441039	*	451039	*

\*\* Weighs less than a pound